



# SolidLux

Instant Coating



The only  
**Coloured Floor Coating**  
that cures at the  
speed of light

- ✓ Fast application
- ✓ Cures instantly
- ✓ Ready to use in minutes



## SolidLux: getting the unthinkable done in no time!

In some places, floors never get a rest. When activity is non stop, coating a floor can be a real problem. After years of research a ground-breaking solution is now available. An instant drying, industrial-quality coloured floor coating that cures in minutes and can be back into service. SolidLux Instant Coating.

A new floor coat, in the blink of an eye! This new, patented coating system is the only floor coating that cures instantly by exposure to UV light. The coated surface resists mechanical and chemical pressures within minutes. A new floor coat, applied and finished with the minimum of interruption to normal business operations.

### Patented system

SolidLux has been developed in partnership with specialists in the area of UV technology and application technology. A successful co-creation that has delivered a patented system recognised as a break-through in industrial floor treatment.

While one section of the floor is being treated, activity elsewhere in the area can continue. What's more, SolidLux is an all-weather coating that can be applied both indoors and outdoors- even in temperatures below freezing!





**100% ready to use in minutes**

Never before has it been possible to deliver a commercial coating system that combines everything everyone wants: an instantly curing, heavy-duty industrial floor finish, in a choice of colours, and it's even available in an anti-slip finish!

### The benefits

Time is money. And that says a lot about the benefits of Solidlux. A SolidLux coating system can be applied in between other activities, with minimal interruption of the regular activities in the area. There is minimum disturbance of accessibility to apartments, undercover parking areas and other public spaces. In many cases, a well planned working method will even eliminate the need for temporary provisions.

The SolidLux line consists of priming and coating products, including a filling paste for repairs, a primer

and levelling coat, a base coat, and a topcoat. Each product is based on the patented UV technology for instant curing. Whether it's a new top coat or a complete system, the time savings are impressive in every situation!

**Additional bonus:** the standard SolidLux coating system (Basecoat and Topcoat) is a single component system. And that's good for the environment as well as efficient. Minimal loss of material, fewer application tools, less waste and a solvent-free product!

### The colours

SolidLux is available in 10 industrial standard colours. Other colours are available on request.

Note: colours shown may vary from the printed result. For true colour samples please refer to the SolidLux Samplebox.



S.L. 3009



S.L. 5009



S.L. 7006



S.L. 7016



S.L. 7032



S.L. 1014



S.L. 7001



S.L. 7010

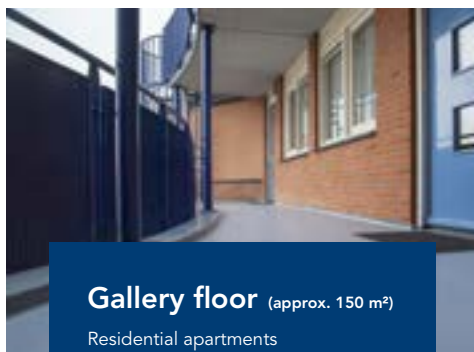


S.L. 7030



S.L. 7037

# In practice



**Gallery floor** (approx. 150 m<sup>2</sup>)

Residential apartments

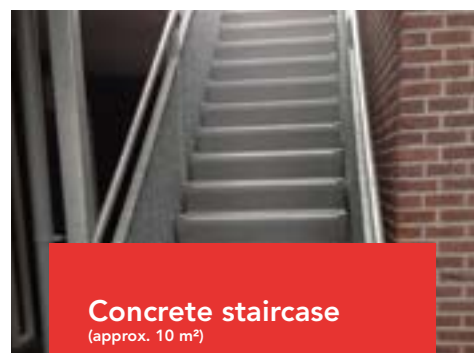


By treating a gallery floor in sections with SolidLux, inconvenience is minimised to no more than a 15-minute wait before the gallery can be used again.

Total time from preparation to completion:  
traditional floor coating system: approx. 3 days.

**SolidLux: approx. 5 hours.**

	SolidLux system	Traditional systems
Resistant to chemicals	Instantly	After 7 days minimum
Resistant to mechanical stress	Instantly	After 2 days minimum
Wear and tear resistance	High	Reasonable
Temperature	Independent	Dependent (> 5 degrees C)
Constituents	1 component	2 or 3 components
System	Solvent-free	Various



**Concrete staircase**

(approx. 10 m<sup>2</sup>)



A concrete staircase continues to be serviceable by treating the steps with SolidLux one at a time. The staircase was fully coated and accessible in two hours.

Total time from preparation to completion:  
traditional floor coating system: approx. 3 days.

**SolidLux: approx. 2 hours.**



## Certified coating specialists

SolidLux floor coating is applied by certified coating specialists, qualified and trained to apply the system. They are experienced in all facets of the material and UV technology and will use the unique advantages of the SolidLux system to maximum effect.

## The benefits

- ✓ Significant time savings
- ✓ Instantly resistant to mechanical and chemical pressures
- ✓ Equally suitable for indoor and outdoor use
- ✓ Temperature independent
- ✓ Cleans perfectly

## The system

The complete SolidLux system includes 5 products. All products are engineered for UV curing and instant wear-resistance.



### Topcoat

- > heavy-duty top coat
- > excellent long-life even outdoors
- > cleans perfectly
- > solvent-free



### Basecoat

- > suitable as primer or intermediate layer
- > strong adhesion
- > solvent-free



### Screed

- > levelling coat
- > good flow
- > dual cure technology



### Adhesive

- > solidifies porous substrates
- > easy to work
- > dual cure technology



### Putty

- > spot repair paste for levelling holes and flaws



🏠 SolidLux  
P.O. Box 205  
NL 8000 AE Zwolle

🌐 [www.solidluxcoating.com](http://www.solidluxcoating.com)  
✉ [info@solidluxcoating.com](mailto:info@solidluxcoating.com)

  
**SolidLux**  
Instant Coating